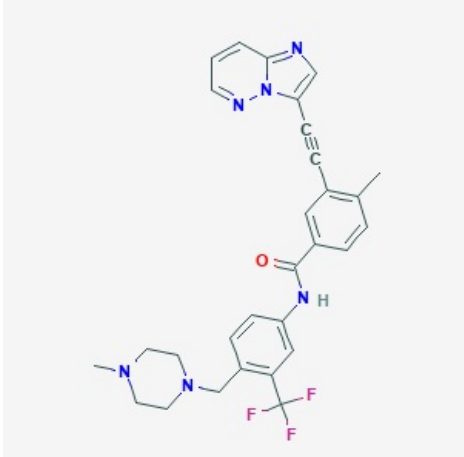


# Ponatinib

Printed from <https://www.cancerquest.org/node/6419> on 12/15/2025



Brand name: Iclusig®

IUPAC: 3-(2-imidazo[1,2-b]pyridazin-3-ylethynyl)-4-methyl-N-[4-[(4-methylpiperazin-1-yl)methyl]-3-(trifluoromethyl)phenyl]benzamide

FDA approval: Yes

[Enlace al fabricante](#)

Usage:

Iclusig is a pill. Grapefruit can't be ingested. Swallow Iclusig tablets whole with at least 8 ounces of water. Do not crush or dissolve tablets.

Mechanism:

Iclusig is designed to block tumor cell growth in several ways. Iclusig targets several proteins called tyrosine kinases that are on the surface of cancer cells, as well as targets within the cell. A lot of these targets are thought to be involved in angiogenesis, which is making of blood vessels. With the blocking of these targets, the cancer will shrink and cannot expand without angiogenesis.

Side effects:

Side effects include: high blood pressure, neutropenia, leukopenia, blood sugar increased, low platelets, phosphorous decreased, anemia, rash, increased liver enzymes ALT/AST, calcium decreased, abdominal pain, constipation, fatigue, headache, dry skin, fever, nausea, appetite decreased, and joint pain.