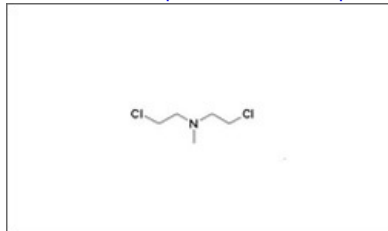


Mechlorethamine

Printed from <https://www.cancerquest.org/patients/drug-reference/mechlorethamine> on 12/12/2025



Brand name: Mustargen®

Brand name: Chlormethine

Brand name: Nitrogen mustard

Brand name: Embichin®

IUPAC: 2-chloro-N-(2-chloroethyl)-N-methylethanamine

FDA approval: Yes

[Manufacturer Link](#)

Usage:

Mechlorethamine (Mustargen®, Chlormethine, Nitrogen mustard) is an alkylating agent used primarily in the treatment of Hodgkin's disease as part of the MOPP regimen (Mechlorethamine, Oncovin®, Prednisone, Procarbazine). Other malignancies for which mechlorethamine is used include chronic lymphocytic leukemia, chronic myelogenous leukemia, small cell lung cancer, medulloblastoma non-Hodgkin's lymphoma. Mechlorethamine is commonly administered via injection.¹

¹ Chu, E., & DeVita, V. T. (2015). Physicians' cancer chemotherapy drug manual 2015. Burlington, MA: Jones & Bartlett Learning.

Mechanism:

Mechlorethamine, which is an analog of mustard gas, is an alkylating agent that prevents DNA synthesis and RNA transcription by attaching alkyl groups to DNA bases, forms cross-links on DNA, and mispairs nucleotides which causes mutations.¹

The structure above shows the 3D diagram of Mechlorethamine.

¹ Chu, E., & DeVita, V. T. (2015). Physicians' cancer chemotherapy drug manual 2015. Burlington, MA: Jones & Bartlett Learning.

Side effects:

Common side effects include myelosuppression, nausea, vomiting, pain at site of injection, and alopecia. These effects can be diminished by pre-treatment with cannabinoids or phenothizine, severe bone marrow depression limits extensive use and latent viral infections may appear because of the immunosuppressive effects of the drug.¹

¹ Chu, E., & DeVita, V. T. (2015). Physicians' cancer chemotherapy drug manual 2015. Burlington, MA: Jones & Bartlett Learning.